

City of Los Angeles Safe Clean Water Program

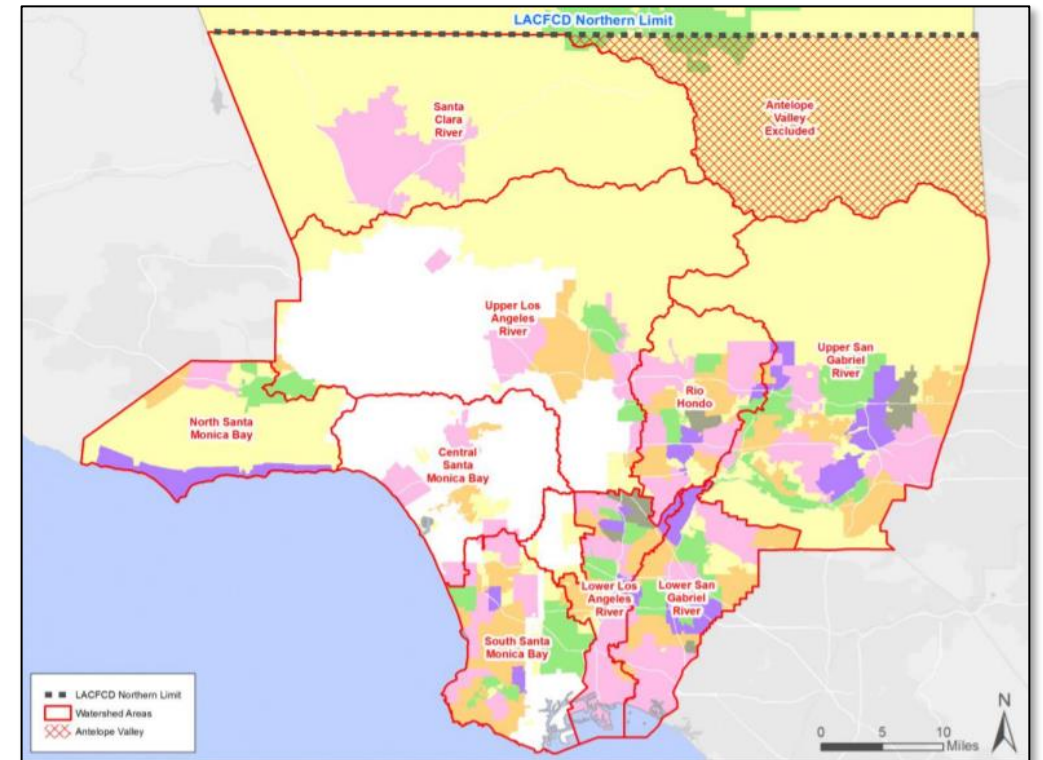


**North Sepulveda Pedestrian Island
Van Nuys Neighborhood Council
06/12/2024**



Safe Clean Water Program

- LA County voters passed Measure W in 2018 to establish the Safe Clean Water Program.
- The program generates approximately \$285 million annually for multi-benefit projects that will improve water quality and capture stormwater.
- Program includes funding for municipalities and a regional competitive grant program for LA County's nine watersheds.



LA County Safe Clean Water Program

Water Quality Compliance

- Protect water quality
- Protect rivers, lakes, and bays
- Assist in compliance with federal, state, and local water quality mandates



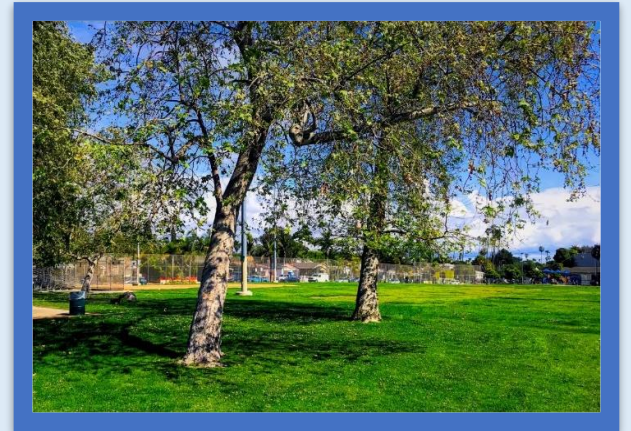
Water Supply & Resilience

- Reduce LA's reliance on imported water
- Develop new water supplies



Community Investments

- Invest in disadvantaged communities
- Create more green space
- Environmental justice
- Flood protection
- Create jobs for local workforce



Project Overview

Project Location

- Upper Los Angeles River Watershed
- Address: Median Island located on Sepulveda Blvd between Haynes St. and Lemay St.
- Council District: 6

Background

- Project site identified by CD 6 for stormwater improvements and beautification.



Project Scope

This multi-benefit project will provide urban runoff treatment, green space, and improved access to public transit.

Project elements include:

- A 7 ft wide parkway
- 26 parkway swales with active irrigation
- 4 new access ramps
- An upgrade to 3 existing access ramps
- 27 new trees
- A 5 ft wide concrete walkway
- A permeable paver bus stop waiting area with benches and a trash receptacle.
- Plant native vegetation

Before

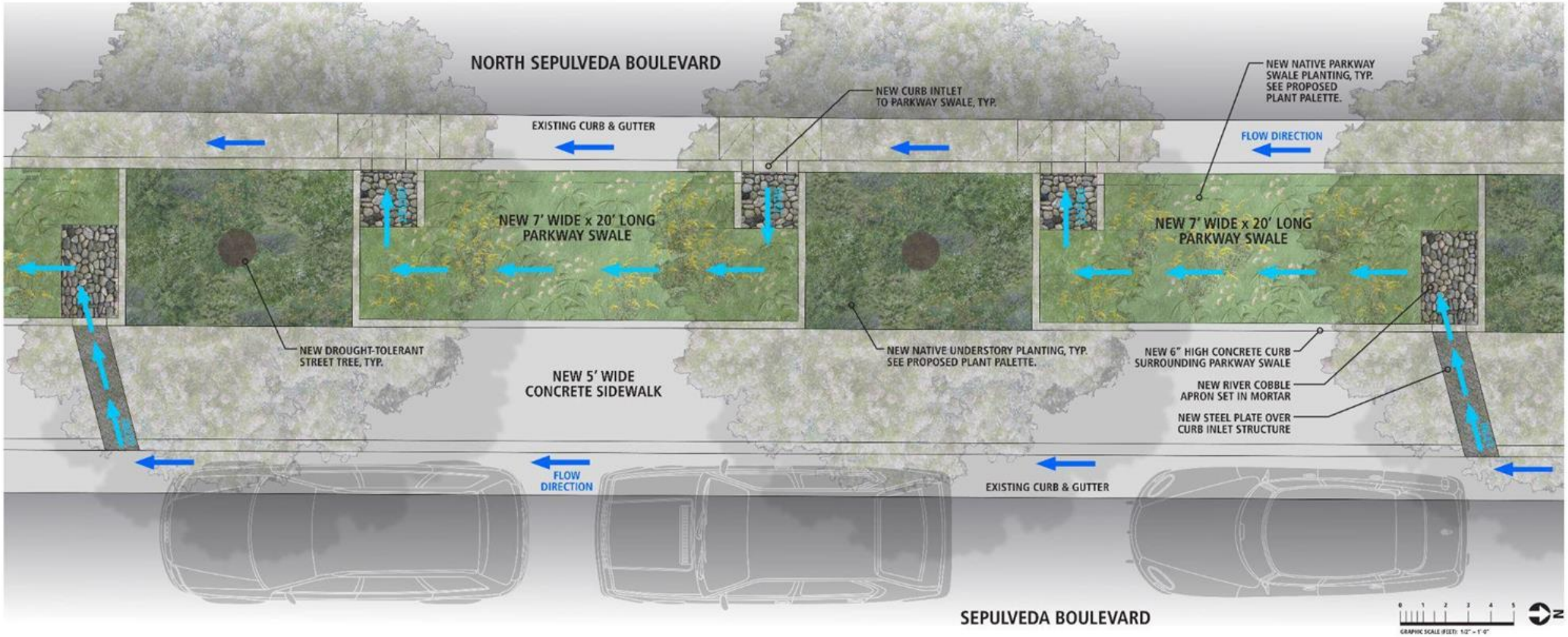


After



Project Renderings

CONCEPTUAL SITE PLAN



Project Planting Palette

PARKWAY TREES **



Photo by Robert Perry

Desert Museum Palo Verde (*Parkinsonia X 'Desert Museum'*)



Photo by Mountain States Wholesale Nursery

Desert Willow (*Chilopsis linearis*)

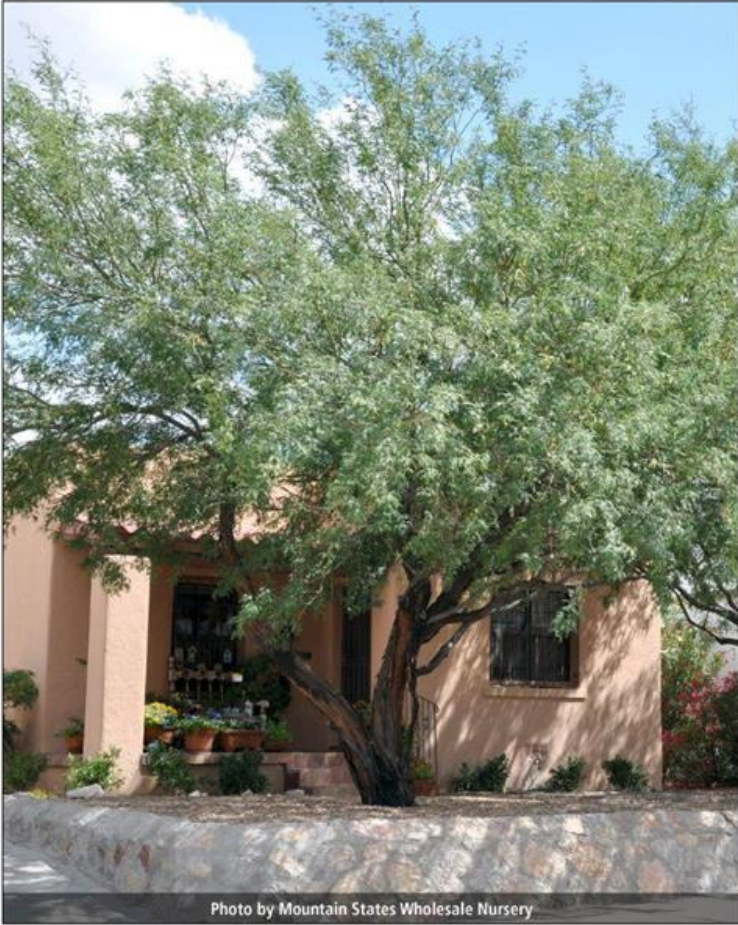


Photo by Mountain States Wholesale Nursery

Honey Mesquite (*Prosopis glandulosa*)

****Please note these are examples only.
Different, similar trees, shrubs, perennials, etc. may be used.**



Project Planting Palette

PARKWAY SHRUBS & PERENNIALS **



Photo by Robert Perry

Purple Three Awn (*Aristida purpurea*)



Photo by Katie Hetrick, UC Davis

Valley Violet Ceanothus (*Ceanothus 'Valley Violet'*)



Photo by Maureen Barlin

California Poppy (*Eschscholzia californica*)



Photo by Joshua Link

Foothill Penstemon (*Penstemon heterophyllus*)



Photo by Joshua Link

Montara Sagebrush (*Artemisia californica 'Montara'*)



Photo by Laura Camp

California Buchwheat (*Eriogonum fasciculatum*)



Photo by Pete Veilleux, East Bay Wilds

Golden Aster (*Heterotheca 'San Bruno Mountain'*)



Photo by Robert Perry

Apricot Mallow (*Sphaeralcea ambigua*)



Photo by Joshua Link

Pozo Surf Coyote Brush (*Baccharis 'Poza Surf'*)



Photo by Pete Veilleux, East Bay Wilds

California Fuchsia (*Epilobium canum*)



Photo by Pete Veilleux, East Bay Wilds

Deer Grass (*Muhlenbergia rigens*)



Photo by Jordan Valley Conservation Water District

Angelita Daisy (*Tetranneuris acaulis*)

**Please note these are examples only.
Different, similar trees, shrubs, perennials, etc. may be used.



Project Planting Palette

PROPOSED STORMWATER SWALE PERENNIALS **

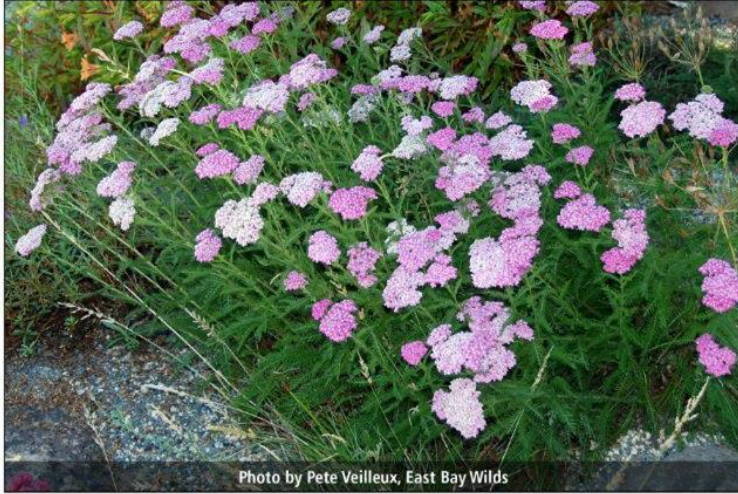


Photo by Pete Veilleux, East Bay Wilds

Island Pink Yarrow (*Achillea millefolium* 'Island Pink')

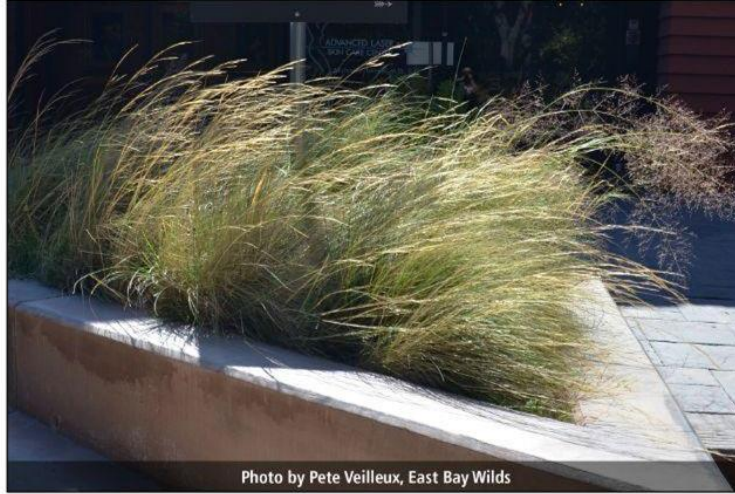


Photo by Pete Veilleux, East Bay Wilds

Alkali Sacaton (*Sporobolus airoides*)



Photo by Laura Camp

Narrow Leaf Milkweed (*Asclepias fascicularis*)



Photo by Katie Hetrick, UC Davis

California Goldenrod (*Solidago velutina* ssp. *californica*)

***Please note these are examples only. Different, similar trees, shrubs, perennials, etc. may be used.*



Project Bus Stop Permeable Paver



Hydro-Flo™ Holland Pavers

The Pacific Interlock Pavers Hydro-Flo™ Holland Permeable Paver has stood the test of time. Sleek and elegant are words that are frequently used to describe the Holland paver.

The classic lines of the Holland style are enhanced by one of the largest selections of natural colors and patterns of any paver.

Blend the unique characteristics of this style to make a spectacular courtyard, driveway, pool area or entrance.

The Hydro-Flo™ Holland permeable paver comes in two thicknesses (60mm and 80mm).

Category: HydroFlo™ Series



Approved Colors

Pavers with Solar Reflective Index (SRI) of 29 or more



W1 SB Tan (Santa Barbara Tan)



W2 Sahara Sands (cream/tan)

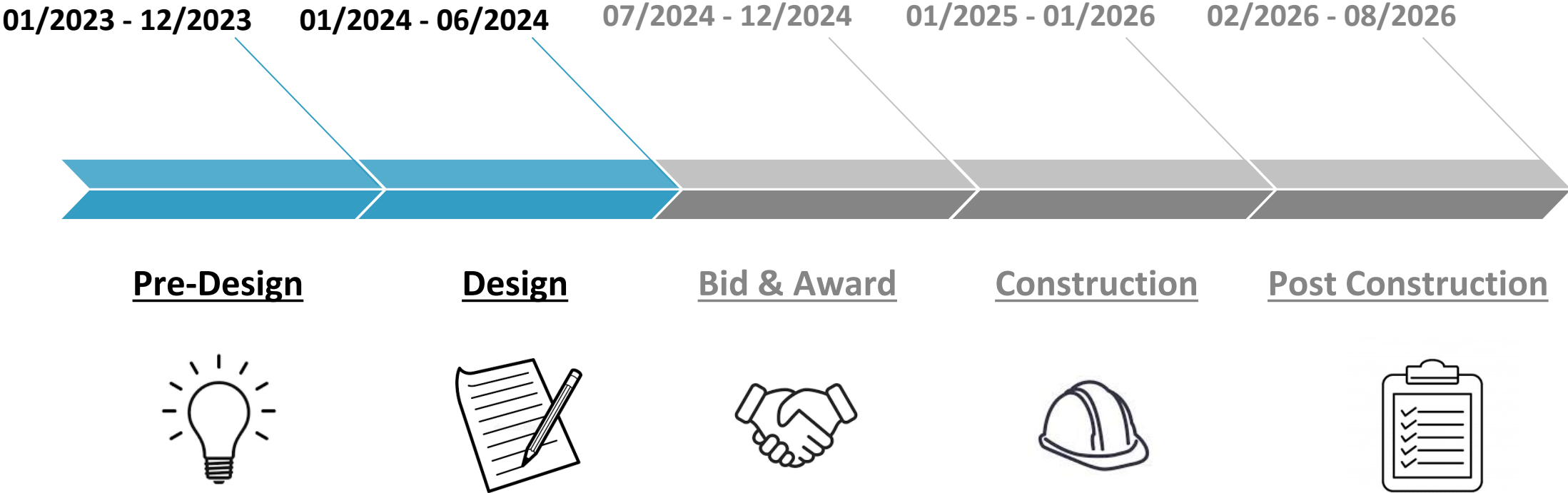


S2 Tan (Solid)



Schedule

Project Schedule



Community Outreach Timeline

Spring 2024

- Presentation to Van Nuys Neighborhood Council PLUM Committee & Board
- Begin community survey for Tree and Plant Palette selection

Summer 2024

- Community Pop-Up event
- Distribution of Project Fact Sheet
- Results of survey on greening elements

Fall - Winter 2024

- Updated presentations to stakeholders
- Community Pop-Up event
- Distribution of first Construction Notice via email and in-person canvassing

Jan. 2025 - Jan. 2026

- Construction Phase
- Regular construction updates via email
 - Respond to any community questions/concerns within 24 hours
 - Groundbreaking & Ribbon-Cutting Events



THANK YOU!

For questions or comments contact:

Lori Garcia, LASAN
Community Outreach Team
lori.garcia@lacity.org
(213) 485-3221

Scan to sign
up for email
updates



LA Sanitation and Environment's Mission:
"Protect Public Health and the Environment"