

EQUIPMENT SCHEDULE

ITEM	LIST	MANUFACTURER	MODEL #	NSI	SPECIAL FAB	ELECTRICAL	HOT WATER	COLD WATER	DIRECT WASTE	INDIRECT WASTE	SUB. CONTAINED
1	10' F. KITCHEN HOOD	CAPITALA SE	NO-2								
2	ROU SERVICE CHOCOLATE SMIN	H. BUIZ FINOS	1000								
3	DOOPER CHOCOLATE BRONZE OVEN	WOODSTONE-CORP	855-DBL-3708								
4	DOOPER CHOCOLATE BRONZE OVEN	WOODSTONE-CORP	855-DBL-3708								
5	DOOPER CHOCOLATE BRONZE OVEN	WOODSTONE-CORP	855-DBL-3708								
6	STANDALONE	WOODSTONE-CORP	855-DBL-3708								
7	5.5'-3'-COMB. SINK W/ DRAIN 30	GENERAL RESTAURANT EQUIPMENT	WALZ-07727- REEP WOODEN ED								
8	5.5'-3'-COMB. SINK W/ DRAIN 30	GENERAL RESTAURANT EQUIPMENT	WALZ-07727- REEP WOODEN ED								
9	5.5'-3'-COMB. SINK W/ DRAIN 30	GENERAL RESTAURANT EQUIPMENT	WALZ-07727- REEP WOODEN ED								
10	HAND SINK W/ SOAP & TOWEL DISP	GENERAL RESTAURANT EQUIPMENT	13" HT. MIN								
11	WATER HEATER - 80 GAL 160,000 BTU	AMERICAN	BOC-3-SYRHS-SN								
12	DISH WASH	METRO SODA SERVICE	W/ET-1445-S								
13	DISH WASH	METRO SODA SERVICE	W/ET-1445-S								
14	5.5' WORK TABLE	GENERAL RESTAURANT EQUIPMENT	W/ET-1445-S								
15	COOL PREP TABLE	GENERAL RESTAURANT EQUIPMENT	SPR-1-6								
16	10' F. KITCHEN HOOD	CAPITALA SE	NO-2								
17	MSP SHIP W/MACHINE & CHINA SHELF	GENERAL RESTAURANT EQUIPMENT	FLOOR BOOM W/MASK FLOW REVERSING								
18	DOOR WASH MACHINE - CHEMICAL WASH	CHEMICAL "COND. WASH"	CUSTOM (S.S. FINISH)								
19	SODA MACHINE	COCA COLA OR PEPSI COCA									
20	COCA COLA W/ SOAP & TOWEL DISP	AMERICAN	BOC-3-SYRHS-SN								
21	WATER HEATER - 80 GAL 160,000 BTU	AMERICAN	BOC-3-SYRHS-SN								
22	5.5' WALL MOUNTED SINK 12" REEP	PROBOST	633/648/0								
23	3'-DOOR REFRIG-R FREEZER	GENERAL RESTAURANT EQUIPMENT	70" HT.								
24	3'-DOOR REFRIG-R FREEZER	GENERAL RESTAURANT EQUIPMENT	70" HT.								
25	3'-DOOR REFRIG-R FREEZER	GENERAL RESTAURANT EQUIPMENT	70" HT.								
26	3'-DOOR REFRIG-R FREEZER	GENERAL RESTAURANT EQUIPMENT	70" HT.								
27	COFFEE MACHINE	SECRETMAN	SECRETMAN								
28	HEAT EXCHANGER-COOKERS	SECRETMAN	SECRETMAN								
29	COOL PREP TABLE (SMAKO)	SECRETMAN	SECRETMAN								
30	COOL PREP TABLE (SMAKO)	SECRETMAN	SECRETMAN								

NOTE: ALL EQUIPMENT SHALL BE EASILY MOVABLE, ON 6" LEGS FROM FLOOR OR SEALED TO MIN. 4" SOLID LAMINATE. 5.5' WALL MOUNTED SINK 12" REEP. IF ON AN ISLAND, IT SHALL OVERHANG THE BASE 2" MIN BUT NO MORE THAN THE HT OF ISLAND.

ROOM FINISH SCHEDULE

ROOM	FLOOR	WALL	CEILING	REMARKS
101	VINYL TILE	PAINT	POP	
102	CARPET	PAINT	POP	
103	CERAMIC TILE	PAINT	POP	
104	GLASSY TILE	PAINT	POP	
105	4" TILE BASE	PAINT	POP	
106	CURRY TILE 3/4" RADIUS COVE	PAINT	POP	

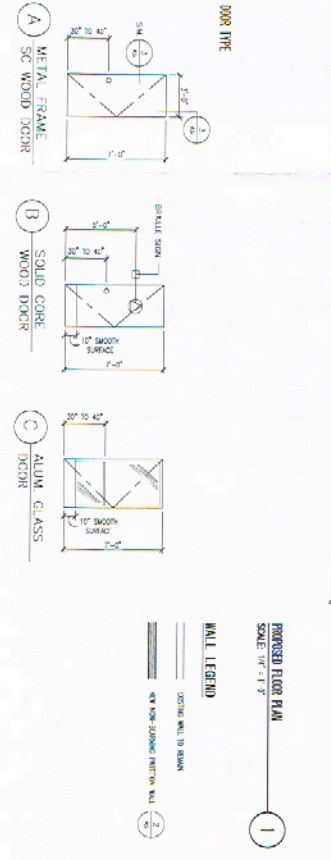
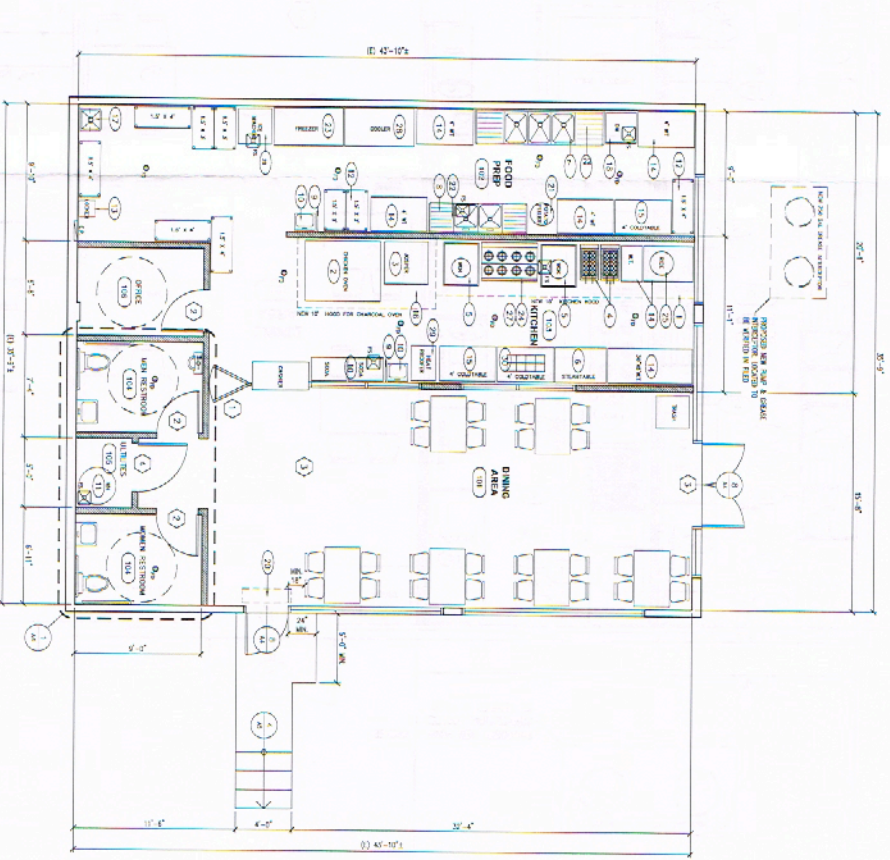
1. 5/8" x 1" x 1" CERAMIC TILE
 2. 1/4" x 1/4" x 1/4" CERAMIC TILE
 3. 3/4" x 3/4" x 3/4" CERAMIC TILE
 4. 3/4" x 3/4" x 3/4" CERAMIC TILE
 5. 3/4" x 3/4" x 3/4" CERAMIC TILE
 6. 3/4" x 3/4" x 3/4" CERAMIC TILE
 7. 3/4" x 3/4" x 3/4" CERAMIC TILE
 8. 3/4" x 3/4" x 3/4" CERAMIC TILE
 9. 3/4" x 3/4" x 3/4" CERAMIC TILE
 10. 3/4" x 3/4" x 3/4" CERAMIC TILE
 11. 3/4" x 3/4" x 3/4" CERAMIC TILE
 12. 3/4" x 3/4" x 3/4" CERAMIC TILE
 13. 3/4" x 3/4" x 3/4" CERAMIC TILE
 14. 3/4" x 3/4" x 3/4" CERAMIC TILE
 15. 3/4" x 3/4" x 3/4" CERAMIC TILE
 16. 3/4" x 3/4" x 3/4" CERAMIC TILE
 17. 3/4" x 3/4" x 3/4" CERAMIC TILE
 18. 3/4" x 3/4" x 3/4" CERAMIC TILE
 19. 3/4" x 3/4" x 3/4" CERAMIC TILE
 20. 3/4" x 3/4" x 3/4" CERAMIC TILE
 21. 3/4" x 3/4" x 3/4" CERAMIC TILE
 22. 3/4" x 3/4" x 3/4" CERAMIC TILE
 23. 3/4" x 3/4" x 3/4" CERAMIC TILE
 24. 3/4" x 3/4" x 3/4" CERAMIC TILE
 25. 3/4" x 3/4" x 3/4" CERAMIC TILE
 26. 3/4" x 3/4" x 3/4" CERAMIC TILE
 27. 3/4" x 3/4" x 3/4" CERAMIC TILE
 28. 3/4" x 3/4" x 3/4" CERAMIC TILE
 29. 3/4" x 3/4" x 3/4" CERAMIC TILE
 30. 3/4" x 3/4" x 3/4" CERAMIC TILE

DOOR SCHEDULE

MARK	WIDTH X HEIGHT	THICK	TYPE	MATERIAL	FRAME	FINISHES	KEY LOCK	SELF CLOSE	DOOR STOP	PASSAGE	PRIVACY LOCK	ROOM SIGN	WEATHERSTRIP	KICK PLATE	DOUBLE SWING	EXISTING
1	3'-0" x 7'-0"	1 1/4"	A	SC. WOOD	ALUM	PANED										
2	3'-0" x 7'-0"	1 1/4"	A	SC. WOOD	ALUM	PANED										
3	3'-0" x 7'-0"	1 1/4"	A	SC. WOOD	ALUM	PANED										
4	3'-0" x 7'-0"	1 1/4"	A	SC. WOOD	ALUM	PANED										

DOOR SCHEDULE NOTES:

1. TYPICAL GLASS & ALUM. FRAME.
2. DOOR SHALL BE OPERABLE FROM INSIDE WITHOUT THE USE OF A KEY OR ANY SPECIAL EQUIPMENT.
3. DOOR SHALL BE OPERABLE FROM INSIDE WITHOUT THE USE OF A KEY OR ANY SPECIAL EQUIPMENT.
4. DOOR SHALL BE OPERABLE FROM INSIDE WITHOUT THE USE OF A KEY OR ANY SPECIAL EQUIPMENT.
5. DOOR SHALL BE OPERABLE FROM INSIDE WITHOUT THE USE OF A KEY OR ANY SPECIAL EQUIPMENT.
6. DOOR SHALL BE OPERABLE FROM INSIDE WITHOUT THE USE OF A KEY OR ANY SPECIAL EQUIPMENT.
7. DOOR SHALL BE OPERABLE FROM INSIDE WITHOUT THE USE OF A KEY OR ANY SPECIAL EQUIPMENT.
8. DOOR SHALL BE OPERABLE FROM INSIDE WITHOUT THE USE OF A KEY OR ANY SPECIAL EQUIPMENT.
9. DOOR SHALL BE OPERABLE FROM INSIDE WITHOUT THE USE OF A KEY OR ANY SPECIAL EQUIPMENT.
10. DOOR SHALL BE OPERABLE FROM INSIDE WITHOUT THE USE OF A KEY OR ANY SPECIAL EQUIPMENT.
11. DOOR SHALL BE OPERABLE FROM INSIDE WITHOUT THE USE OF A KEY OR ANY SPECIAL EQUIPMENT.
12. DOOR SHALL BE OPERABLE FROM INSIDE WITHOUT THE USE OF A KEY OR ANY SPECIAL EQUIPMENT.
13. DOOR SHALL BE OPERABLE FROM INSIDE WITHOUT THE USE OF A KEY OR ANY SPECIAL EQUIPMENT.
14. DOOR SHALL BE OPERABLE FROM INSIDE WITHOUT THE USE OF A KEY OR ANY SPECIAL EQUIPMENT.
15. DOOR SHALL BE OPERABLE FROM INSIDE WITHOUT THE USE OF A KEY OR ANY SPECIAL EQUIPMENT.
16. DOOR SHALL BE OPERABLE FROM INSIDE WITHOUT THE USE OF A KEY OR ANY SPECIAL EQUIPMENT.
17. DOOR SHALL BE OPERABLE FROM INSIDE WITHOUT THE USE OF A KEY OR ANY SPECIAL EQUIPMENT.
18. DOOR SHALL BE OPERABLE FROM INSIDE WITHOUT THE USE OF A KEY OR ANY SPECIAL EQUIPMENT.
19. DOOR SHALL BE OPERABLE FROM INSIDE WITHOUT THE USE OF A KEY OR ANY SPECIAL EQUIPMENT.
20. DOOR SHALL BE OPERABLE FROM INSIDE WITHOUT THE USE OF A KEY OR ANY SPECIAL EQUIPMENT.
21. DOOR SHALL BE OPERABLE FROM INSIDE WITHOUT THE USE OF A KEY OR ANY SPECIAL EQUIPMENT.
22. DOOR SHALL BE OPERABLE FROM INSIDE WITHOUT THE USE OF A KEY OR ANY SPECIAL EQUIPMENT.
23. DOOR SHALL BE OPERABLE FROM INSIDE WITHOUT THE USE OF A KEY OR ANY SPECIAL EQUIPMENT.
24. DOOR SHALL BE OPERABLE FROM INSIDE WITHOUT THE USE OF A KEY OR ANY SPECIAL EQUIPMENT.
25. DOOR SHALL BE OPERABLE FROM INSIDE WITHOUT THE USE OF A KEY OR ANY SPECIAL EQUIPMENT.
26. DOOR SHALL BE OPERABLE FROM INSIDE WITHOUT THE USE OF A KEY OR ANY SPECIAL EQUIPMENT.
27. DOOR SHALL BE OPERABLE FROM INSIDE WITHOUT THE USE OF A KEY OR ANY SPECIAL EQUIPMENT.
28. DOOR SHALL BE OPERABLE FROM INSIDE WITHOUT THE USE OF A KEY OR ANY SPECIAL EQUIPMENT.
29. DOOR SHALL BE OPERABLE FROM INSIDE WITHOUT THE USE OF A KEY OR ANY SPECIAL EQUIPMENT.
30. DOOR SHALL BE OPERABLE FROM INSIDE WITHOUT THE USE OF A KEY OR ANY SPECIAL EQUIPMENT.



PETRA
 CONSTRUCTION
 MANAGEMENT, INC.

2550 W. MAIN STREET STE. 1011
 ALHAMBRA, CA 91801
 F: 626.284.5114
 E: info@petraconstruction.com

GRILLOS PERUVIAN
 GRILL T.I.
 7750 SEPULVEDA BLVD.
 LOS ANGELES, CA 91405

DATE: 3/25/2014
 BY: J.H.C.
 SCALE: 1/8" = 1'-0"

FLOOR PLAN & SCHEDULES

A2