

#63067-001 Van Nuys & Hartland



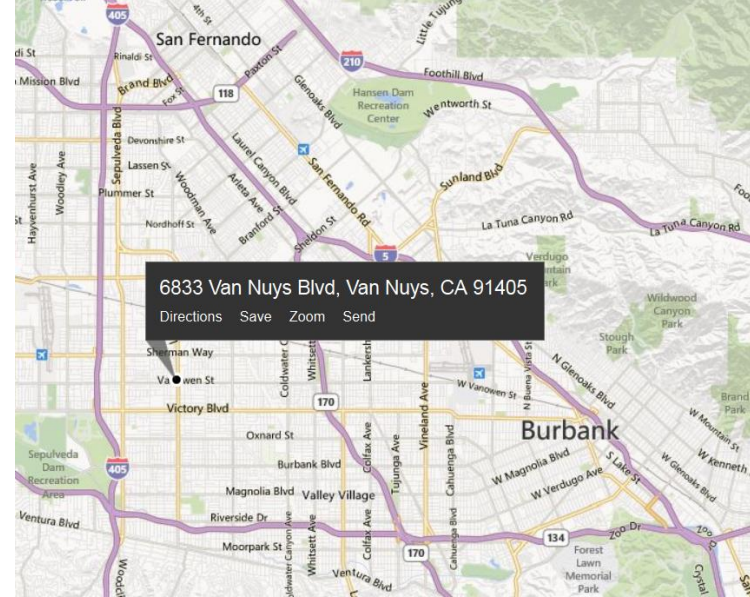
Van Nuys & Hartland
6833 Van Nuys Blvd
Van Nuys CA 91405
Store # TBD
CPN #: 63067-001

Revised 21-Apr-14 by: Slade Blanchard | Design Manager

SCHEMATIC PACKAGE

Sunbelt | Store Design
Starbucks Coffee Company

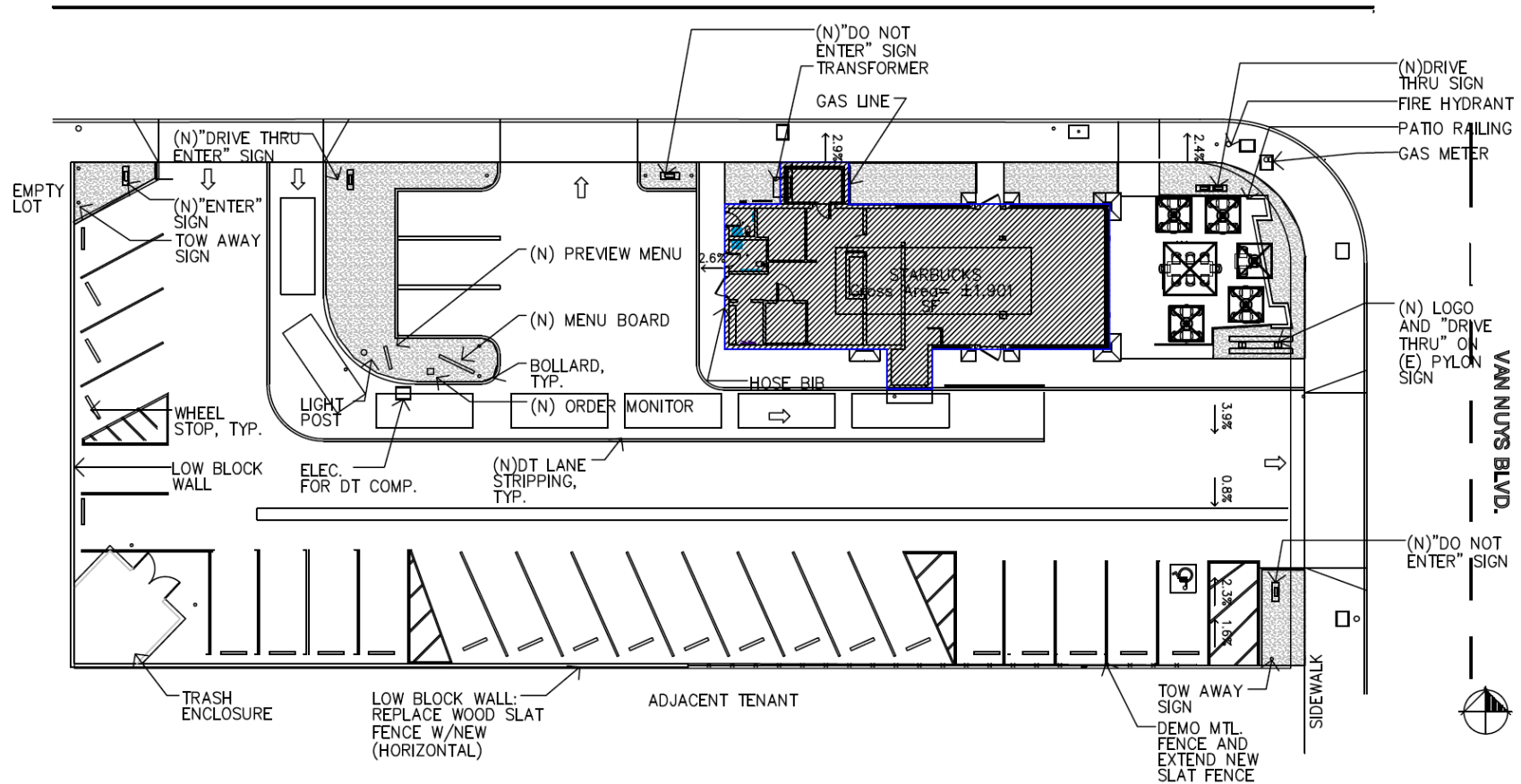
17700 Newhope Street, Suite 200
Fountain Valley, CA 92708

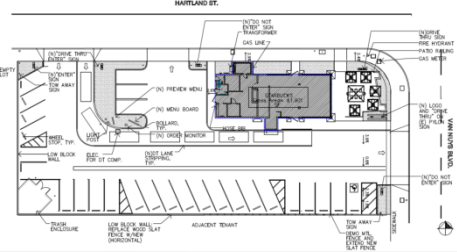


Site location

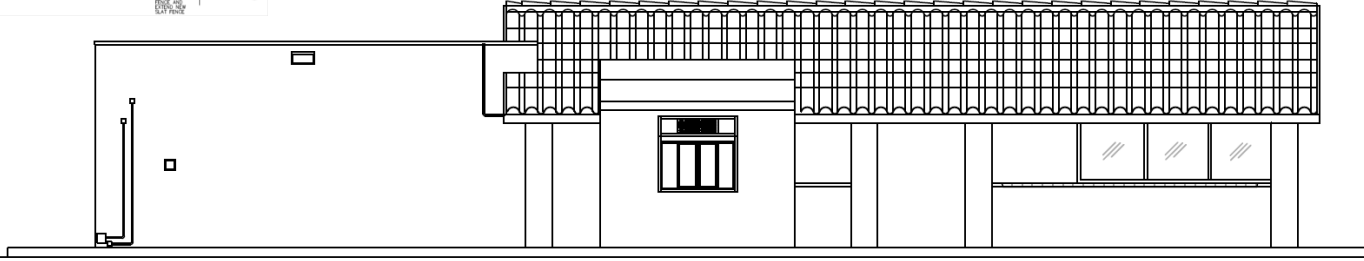
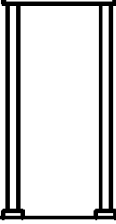


HARTLAND ST.



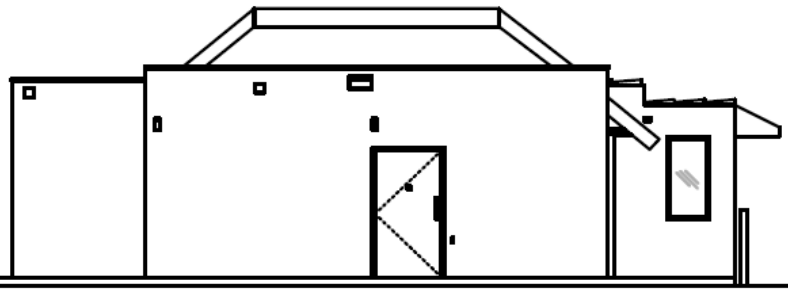


DRIVE THRU

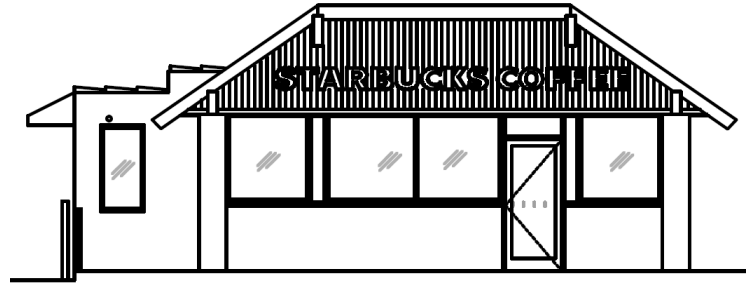


01 SOUTH ELEVATION

New 6' logo disk w/ DRIVE THRU cabinet mounted to existing pylon



02 WEST ELEVATION

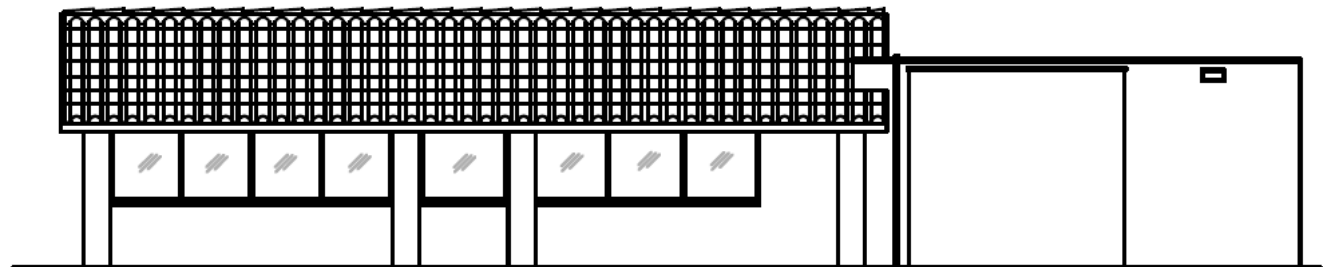
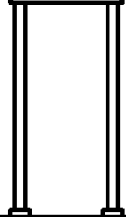


02 EAST ELEVATION

14" wordmark (white)



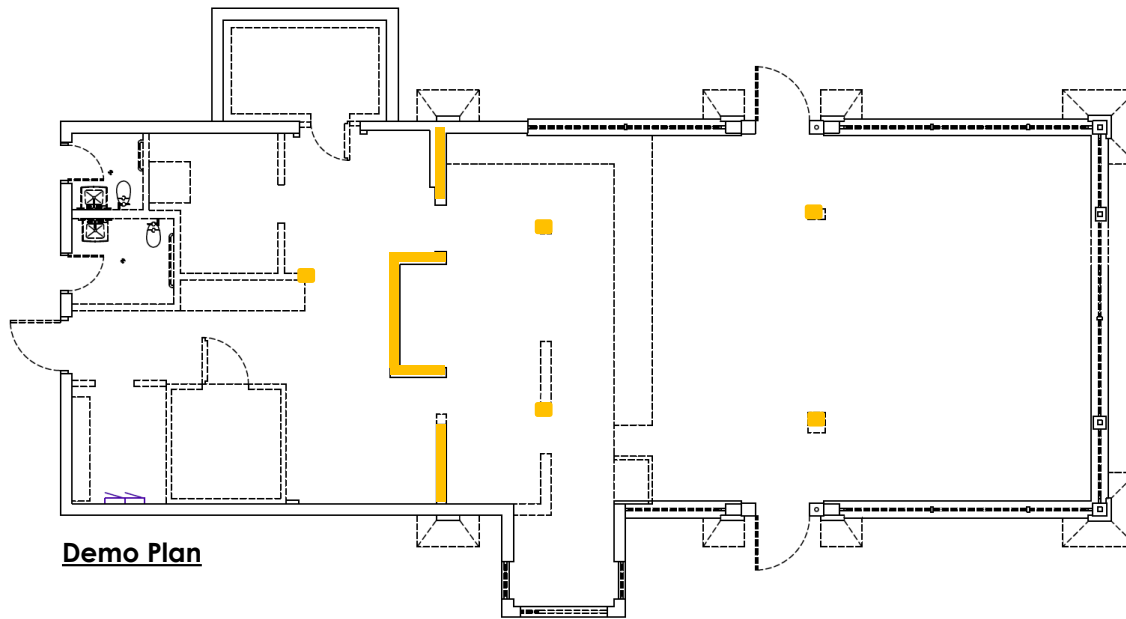
DRIVE THRU



01 NORTH ELEVATION

New 6' logo disk w/ DRIVE THRU cabinet mounted to existing pylon

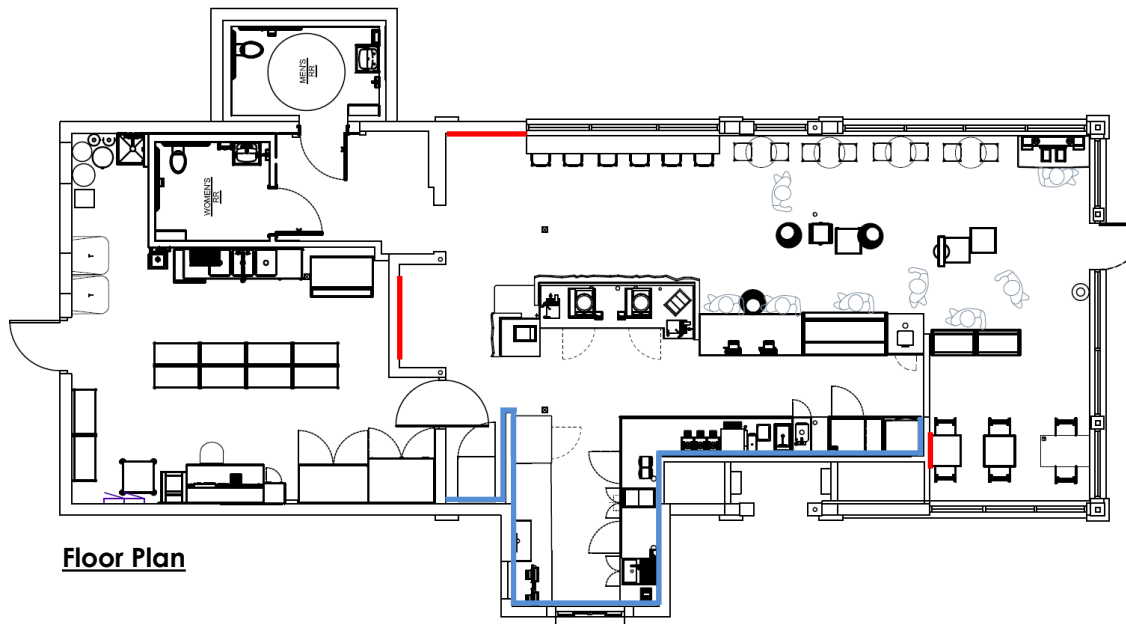




Demo Plan

Demo scope highlights:

1. Replace glazing/drive thru window
2. "Square" sloped piers
3. Widen workroom entry 6" +/-
4. Relocate entry
5. Demo restrooms/doors
6. Replace workroom door
7. Demo walk-in coolers
8. Replace electrical service (outside)
9. Existing columns to remain, but demo furring



Floor Plan

- Art
- Backbar wall tile
- Column/bearing wall

Seating Template		
	Existing	New
Soft Seating	0	0
Café Height	0	6
Banquette	0	0
Bar Height	0	14
Total	0	20



Backline:

5. Brew XBRW 12
6. Warming-dbl WRM 05-01
7. CBS 11-01 WT
8. DT POS-X35
9. Backbar tile, cubbies, menu boards, valance, and under-cubby task lighting

Frontline:

1. Espresso Bar XESP-43
2. POS 13-01
3. A foodcase
4. Scale cabinet

- Cubbies -----
- Cup holders =
- Trash =

